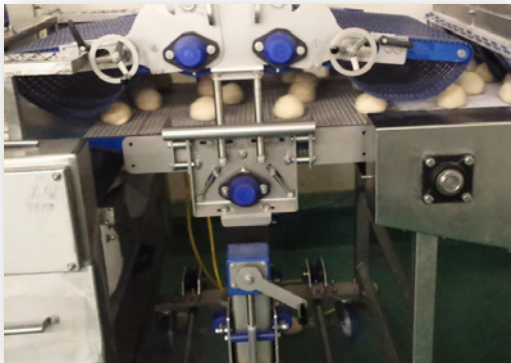


# Modular and wire-mesh belts

## Type 395

### Transfer unit

Suitable for:



## “Smooth transfer with production loss”

The solution to your logistics requirements when:

- Different conveyor belts have to be bridged
- A small transfer gap is desired

### The advantages of Type 395:

- Prevents product damage and incorrect positioning
- Can be mechanically connected to the previous or following conveyor and/or their respective drives
- Guarantees slip-free transport without any tracking
- Is suitable for dry and wet production environments with high or low temperatures
- Guarantees optimal product transfer
- Provides ultra-low-maintenance and user-friendly transport

Available as a modular or wire-mesh belt.



# Modular and wire-mesh belts

## Type 395 Transfer unit

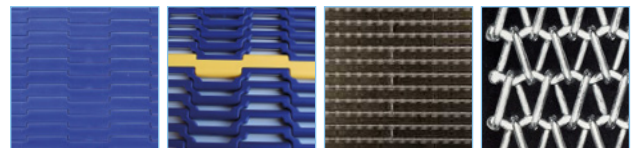
### TECHNICAL SPECIFICATIONS

<b>Construction</b>	Stainless steel plate frame, shot-blasted, and plastic machine parts
<b>Transport length</b>	300 - 900 mm, settable $\pm 50$ mm
<b>Belt width</b>	100 mm - 1600 mm
<b>Belt speed</b>	Belt speed 2 - 50 m/min.
<b>Belt type</b>	Modular band flat top/flush grid/friction top or Cleatrac wire-mesh belt
<b>Operating temperature belt material</b>	Modular: $-50^{\circ}\text{C}$ to $104^{\circ}\text{C}$ Wire-mesh belt: $-50^{\circ}\text{C}$ to $200^{\circ}\text{C}$
<b>Nose bar</b>	Modular belt: $\text{\O}12$ mm equals $\text{\O}24$ mm on the belt $\text{\O}6$ mm equals $\text{\O}18$ mm on the belt Wire belt: $\text{\O}12$ mm equals approx. $\text{\O}20$ mm on the belt
<b>Drive</b>	SEW gear motor with stainless steel safety cover
<b>Drive position</b>	Centre drive
<b>Chassis</b>	Stationary/mobile
<b>Electric power supply</b>	Operating switch

### OPTIONS

- Scrap- and drip plates (fixed or fold-away)
- Belt scraper on adjustable weight
- Side guides (fixed)
- Cable tube 1800 mm high
- Cable shafts
- Stainless steel control cabinet with frequency inverter
- Stainless steel gear motor
- Mechanical transmission via connecting conveyor

### BELT TYPES



Flat top

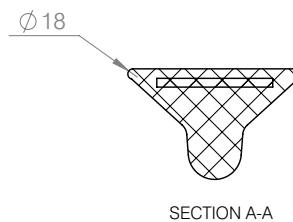
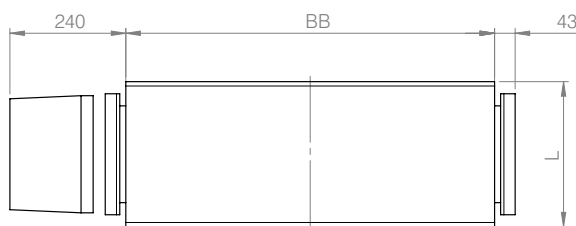
Flush grid

Friction top

Cleatrac

Different dimensions on request, send an e-mail to [sales@marvu.nl](mailto:sales@marvu.nl).

### DRAWINGS



#### Key to symbols

- L Transport length
- BB Belt width
- F Adjustment range

#### Adjustment type

- A  $\pm 50$  mm
- B  $\pm 25$  mm
- C  $-10$  mm +  $40$  mm

Chassis types A and B can also be made with an adjustment range of  $\pm 150$  mm.

